

*Nam Nguyen,
USG, TUAT
Utsunomiya*

Report for Fukushima trip,

1. Problems

There are some problems in Fukushima. In my opinion, there are two main problems:

- The first important problem is the radiated pollution. Although some studies have been performing, but nobody know the end time of problem. To reveal impacts of radiated pollution in term of environment in Fukushima is very difficult. It is necessary to define those impacts step by step. That is the reason why we will spend on a long time to face to problem.



Figure 1 Radiation value with 1 meter above the ground at the Farm Sanctuary Fukushima

- Wet-land areas are appearing along the sea in ODAKA after more than one year of disaster. We should think about another issue will be coming. Land subsidence will be second important problem in this area and it seems to happen so fast.



Figure 2 Forming of wet-land areas in ODAKA after 1 year

2. Hopes

Although Fukushima city has being under impacts of disaster, we can see the ways to face to disaster of people at there. Because of there is not the best way to solve problems immediately, active thinking of Fukushima's people will be the best important thing to pass actual situation. We hope Fukushima people, especially the farmers still keep that thinking in their mind in the future and everything will be fine for people who are living under radiated pollution.



Figure 3 Local farmer in Fukushima

3. Lessons

- The approaches of local government and people to face the risks after disaster;
- The methodologies of disaster studies and the results: setting of radiation contour map, agricultural production in radiation areas, radiation measurement, soil experiments under radiation pollution...;

- The ways of disaster-treatment activities of local people: rehabilitation and restoration of environment, recovering of life-hood and production, reconstruction programs;
- Directed recognizing and feeling of actual impacts of radiation and earthquakes problems.
- Cultures and daily-living of farmers in Fukushima.

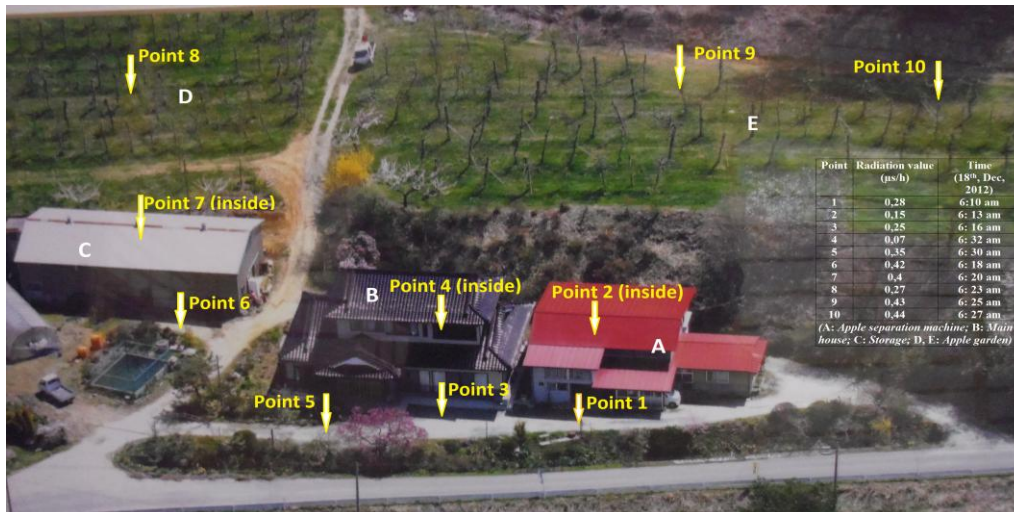


Figure 4 Measured radiation values in the local farm at Fukushima (Group A)

4. Expectations

Soil and water are the important components of the forming for environment and ecology. In addition, they get closed relation together. Although the results of measurement studies are shown that surface water is not affected by radiation, we should think soil pollution can impact to groundwater in natural percolation progressing of the high-land areas where are strongly affected by radiation.

I recognized that the main water source for domestic and irrigation activities in the high-land farms is groundwater. Therefore, groundwater should be assessed on quality and movement of groundwater head relevant to radiated pollution of soil. I will do this topic if I have chance.